

McLanahan Corporation provides ECOGLASS Optical Sorters powered by PICVISA for automated glass sorting. In addition to removing ceramic, stone and porcelain (CSP) impurities from the material stream, the ECOGLASS Optical Sorter is able to sort based on glass color, heat resistant glass, etc. Engineered by PICVISA, the ECOGLASS Optical Sorter is backed by McLanahan's service and support.

## SAFER

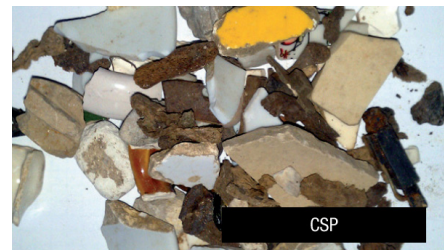
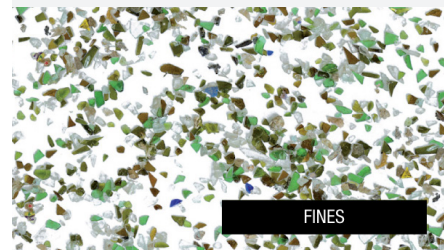
ECOGLASS Optical Sorters are able to completely eliminate the need for any manual labor when it comes to recycling and sorting materials. When maintenance is required, personnel have easy access to all elements of the system. The system also utilizes a telediagnosis system for remote service.

## SIMPLER

A fully automated system, the ECOGLASS Optical Sorter is adjustable for different materials, including presorted, curbside, single stream, or municipal solid waste flow. Maintenance is also simple as ECOGLASS Optical Sorters use off-the-shelf spare parts that are available worldwide, and the LED light has a 10-year expected lifetime. The ECOGLASS Optical Sorter is designed with a modular concept for all different purposes, such as CSP removal, color, reject, fines and leaded.

## SMARTER

Using a high resolution camera, ECOGLASS Optical Sorters are capable of sorting pieces between 0.1" and 2.3" at processing speeds of 7-10 tons/hour or higher based on input material. The ECOGLASS Optical Sorter is designed with a higher distance between the vision system and detection plane, keeping the system cleaner for longer periods of time. It also has blowing nozzles every 0.2" for a more precise separation and less reject fraction.



# ECOGLASS Optical Sorter

## ECOGLASS EG-600

Working Width (inches)	24
Dimensions (inches)	51 x 51 x 24
Sensor	Color Camera
Number of Valves	60
Voltage	100/220/400V
Frequency	50/60Hz
Air Consumption	2,000Lpm
Efficiency	94% or higher
Capacity	7 T/h*

\*Depending on input material

## ECOGLASS EG-1000

Working Width (inches)	39
Dimensions (inches)	49 x 59 x 58
Sensor	Color Camera
Number of Valves	96
Voltage	100/220/400V
Frequency	50/60Hz
Air Consumption	4,000Lpm
Efficiency	94% or higher
Capacity	10 T/h*

\*Depending on input material